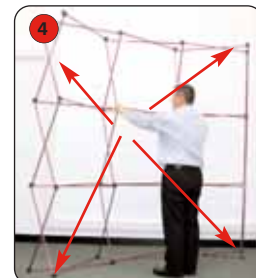
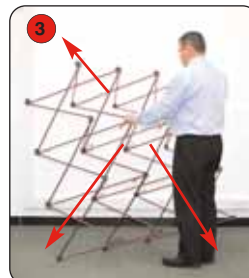


Assembly instructions

Curved Pop-up assembly



Kit includes: Pop-up frame, Mag Bars (for exact number refer to table on back page), D-end graphic panels and Front and/or rear graphic panels



Take the frame, ensuring that the hanging studs are at the top. Stand the frame on the floor (2) and open up (3) until the locking arms lock the frame securely into place (4)



Add the mag bars onto the frame for front, D-ends and if applicable, the rear.



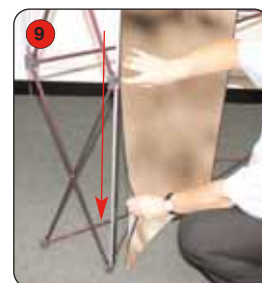
Ensure the mag bars lock onto the magnetic hubs securely.



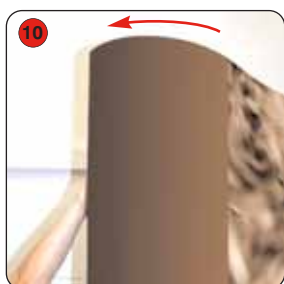
Unwrap each graphic carefully and attach to the frame.



Carefully hook the top hanger onto the studs of the top node.



Smooth the graphic onto the mag bars, ensuring that it sits flat and is aligned to the centre line of each mag bar.



Attach the D-End panel front vertical edge. Curve the graphic round to the back and attach the back vertical edge to complete.



Repeat steps 8 and 9 for the rest of the graphic panels. This applies to front and rear graphics if applicable.



Finally, attach the remaining D-End panel.



Important note:
Remove all mag bars before collapsing the pop-up frame.